

Promo-LEX Election Observation Mission of 2023 General Local Elections: ELECTION DAY FINDINGS AND CONCLUSIONS

Promo-LEX Election Observation Mission of 2023 General Local Elections

ELECTION DAY FINDINGS AND CONCLUSIONS



Funded by
the European Union



Opening of Polling Stations
Earlier than 7:00 AM or with a delay



107 cases

#observerPromo-LEX

Accessibility of polling stations for people with mobility difficulties



652 PS of 1365 are not accessible

#observatorPromo-LEX

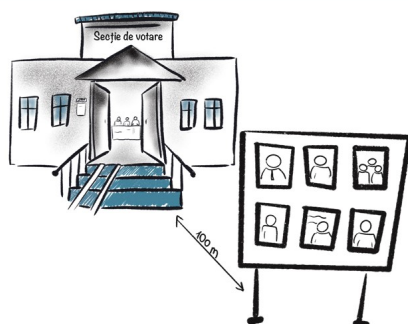
Closing of polling stations earlier or later than 9:00 PM



6 cases

#observatorPromo-LEX

Presence of advertising materials, posters, billboards within the radius of the polling station (100 meters from the PS premises)



13 cases

#observatorPromo-LEX

Restricted access for observers or obstruction of the free observation process in the polling station



10 cases

#observatorPromo-LEX

Ballot boxes were not sealed according to legal procedures / breakage/damage or absence of seals on ballot boxes



16 cases

#observatorPromo-LEX

Unauthorised presence of unauthorised persons in the polling station premises or within 100 m radius



58 cases

#observatorPromo-LEX

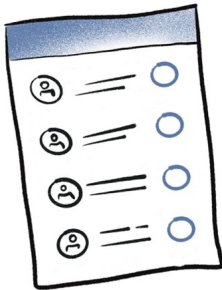
Photographing of ballot papers, violations of the secrecy of voting



128 cases

#observatorPromo-LEX

Ballots not distributed to EBPS members are not kept in the safe/drop box inside the polling station



5 cases

#observatorPromo-LEX

Rumours, attempts or even instances of material or monetary rewards offered to voters within 100 m of the polling station to influence the voters' vote



7 cases

#observatorPromo-LEX

Acts of violence/intimidation of voters or other persons



13 cases

#observatorPromo-LEX

Deficiencies in the functioning of SIAS Elections system (suspension of functioning; situations where SIAS Elections system indicates that the voter has voted and the voter claims he/she did not vote)



55 cases

#observatorPromo-LEX

Deficiencies in the voters lists (discrepancies between addresses; deceased voters; signatures in place of other persons)



88 cases

#observatorPromo-LEX

Unjustified group voting (2 or more people in the voting booths)



128 cases

#observatorPromo-LEX

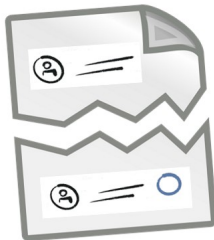
Unjustified interruption/suspension of voting at the polling station



3 cases

#observatorPromo-LEX

The improper use of ballots (damage, refusal to cast them in the ballot box, leaving them in the voting booth)



39 cases

#observatorPromo-LEX

Problematic situations in exercising the right to vote
(request for the ID sheet, voting for people with disabilities outside the polling station)



7 cases

#observatorPromo-LEX

Refusal to issue copies of all the Minutes of the requested vote count



6 cases

#observatorPromo-LEX

Problematic situations in the closing of PS and vote counting process
(disruption by the electoral representatives, discrepancies in the number of ballots and signatures on voters lists)



29 cases

#observatorPromo-LEX

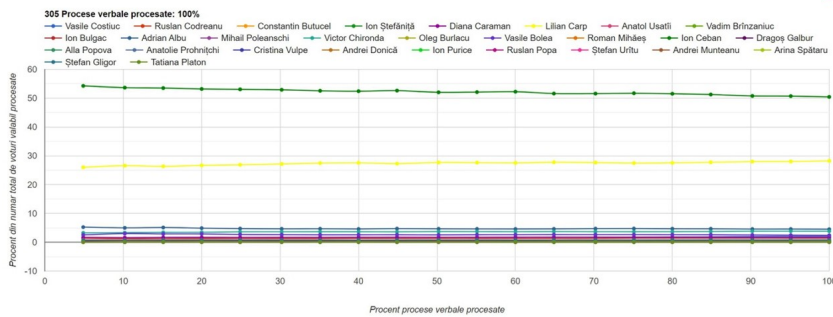
Others



21 cases

#observatorPromo-LEX

Evolution of candidates' scores based on the number of processed minutes, percentage - Chisinau municipality, Mayor



Preliminary results on the vote count in Chisinau municipality

Candidate MAYOR	CEC data	Promo-LEX data
Costiuc Vasile, PPDA	2.10 %	2.10 %
Codreanu Ruslan, B.E. Ruslan Codreanu	1.40 %	1.40 %
Butucel Constantin, PACE	0.25 %	0.25 %
Ștefăniță Ion, MRM	0.26 %	0.26 %
Caraman Diana, PCRM	1.70 %	1.70 %
Carp Lilian, PAS	28.23 %	28.23 %
Usatii Anatol, PDCM	0.81%	0.81%

Preliminary results on the vote count
in Chisinau municipality

Candidate MAYOR	CEC data	Promo-LEX data
Brînzaniuc Vadim, PSDE	0.39 %	0.39 %
Bulgac Ion, CUB	0.71 %	0.71 %
Albu Adrian, PSRM	4.52 %	4.53 %
Poleanschi Mihail, CC	0.15 %	0.15 %
Chironda Victor, PPPDA	3.82 %	3.82 %
Burlacu Oleg, PLDM	0.39 %	0.39 %
Bolea Vasile, PR	2.41 %	2.41 %

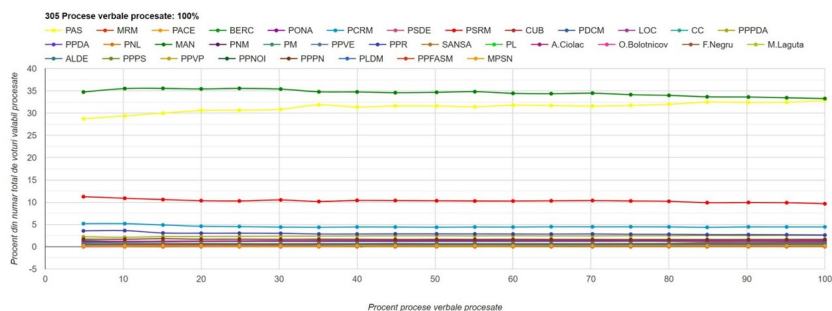
Preliminary results on the vote count
in Chisinau municipality

Candidate MAYOR	CEC data	Promo-LEX data
Mihaeș Roman, PNL	0.12 %	0.30 %
Ceban Ion, MAN	50.62 %	50.44 %
Galbur Dragoș, PNM	0.34 %	0.34 %
Popova Alla, PPM	0.10 %	0.10 %
Prohnițchi Anatolie, PVE	0.06 %	0.06 %
Vulpe Cristina, PȘ	RETRAS	RETRAS
Donică Andrei, MPSN	0.19 %	0.18 %

Preliminary results on the vote count
in Chisinau municipality

Candidate MAYOR	CEC data	Promo-LEX data
Purice Ion, PL	0.20 %	0.20 %
Popa Ruslan, NOI	0.03 %	0.03 %
Urîtu Ștefan, PPVP	0.13 %	0.13 %
Munteanu Andrei, PPN	0.04 %	0.05 %
Spataru Arina, ALDE	0.13 %	0.16 %
Gligor Ștefan, PS	0.83 %	0.80 %
Platon Tatiana, FASM	0.06 %	0.06 %

Evolution of candidates' scores based on the number of processed minutes, percentage - Chisinau municipality, Municipal Councilors



Preliminary results on the vote count in Chisinau municipality

Candidate COUNCILOR	CEC data	Promo-LEX data
PAS	32.88 %	32.90 %
MRM	0.68 %	0.68 %
PACE	0.72 %	0.72 %
BE "Ruslan Codreanu"	1.34 %	1.28 %
PONA	0.63 %	0.63 %
PCRM	4.46 %	4.43 %
PSDE	0.58 %	0.58 %

Preliminary results on the vote count in Chisinau municipality

Candidate COUNCILOR	CEC data	Promo-LEX data
PSRM	9.64 %	9.62 %
CUB	0.94 %	0.94 %
PDCM	1.21 %	1.21 %
LOC	0.11 %	0.11 %
CC	0.28 %	0.27 %
PPPDA	2.55 %	2.57 %
PPDA	1.54 %	1.39 %

Preliminary results on the vote count
in Chisinau municipality

Candidate COUNCILOR	CEC data	Promo-LEX data
PNL	0.14 %	0.14 %
MAN	33.10 %	33.29 %
PNM	0.24 %	0.24 %
PPM	0.18 %	0.17 %
PVE	0.13 %	0.14 %
PR	2.64 %	2.62 %
PȘ	RETRAS	RETRAS

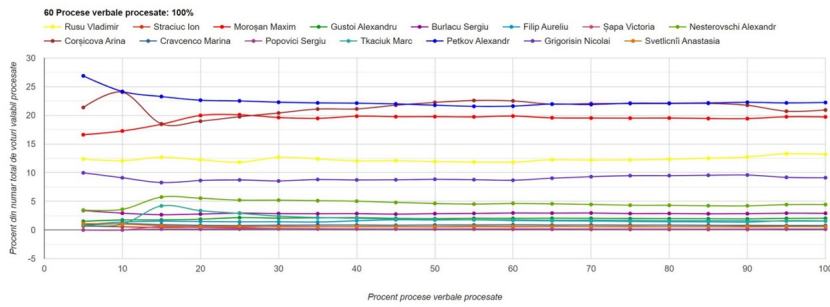
Preliminary results on the vote count
in Chisinau municipality

Candidate COUNCILOR	CEC data	Promo-LEX data
PL	0.30 %	0.34 %
Ciolac Alexandru, CI	1.30 %	1.25 %
Bolotnicov Oleg, CI	0.06 %	0.06 %
Negru Fiodor, CI	0.05 %	0.07 %
Laguta Maia, CI	0.28 %	0.29 %
ALDE	0.23 %	0.24 %
PS	0.76 %	0.74 %

Preliminary results on the vote count
in Chisinau municipality

Candidate COUNCILOR	CEC data	Promo-LEX data
PPVP	0.24 %	0.24 %
PPN	0.08 %	0.16 %
PN	1.72 %	1.66 %
PLDM	0.60 %	0.58 %
FASM	0.18 %	0.19 %
MPSN	0.19 %	0.18 %
Burgudji Grigori, CI	-	-

Evolution of candidates' scores based on the number of processed minutes, percentage - Balti municipality, Mayor



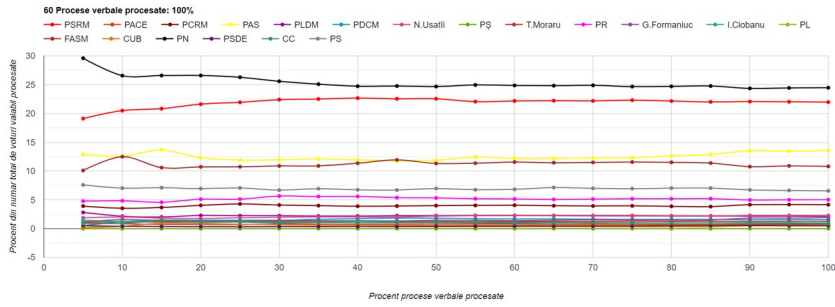
Preliminary results on the vote count in Balti municipality

Candidate MAYOR	CEC data	Promo-LEX data
Rusu Vladimir, PAS	13.19 %	13.25 %
Straciuc Ion, PACE	0.58 %	0.590 %
Moroșan Maxim, PSRM	19.73 %	19.73 %
Gustoi Alexandru, PCRM	2.05 %	2.03 %
Burlacu Sergiu, PLDM	2.91 %	2.92 %
Filip Aureliu, PDCM	1.55 %	1.55 %
Șapa Victoria, PȘ	RETRAS	RETRAS
Nesterovschi Alexandr, PR	3.96 %	3.94 %

Preliminary results on the vote count in Balti municipality

Candidate MAYOR	CEC data	Promo-LEX data
Corșicova Arina, CI	21.52 %	21.42 %
Cravenco Marina, CI	0.79 %	0.78 %
Popovici Sergiu, CUB	0.16 %	0.16 %
Tkaciuk Marc, CC	0.95 %	0.95 %
Petkov Alexandr, PN	22.69 %	22.71 %
Grigorisin Nicolai, PS	9.30 %	9.35 %
Svetlicnii Anastasia, FASM	0.62 %	0.61 %

Evolution of candidates' scores based on the number of processed minutes, percentage - Balti municipality, Municipal Councilors



Preliminary results on the vote count in Balti municipality

Candidate COUNCILOR	CEC data	Promo-LEX data
PSRM	22.13 %	21.96 %
PACE	0.77 %	0.77 %
PCRM	3.91 %	4.15 %
PAS	13.59 %	13.55 %
PLDM	2.13 %	2.13 %
PDCM	1.58 %	1.58 %
Usatii Nicolai, CI	2.23 %	2.29 %

Preliminary results on the vote count in Balti municipality

Candidate COUNCILOR	CEC data	Promo-LEX data
PŞ	RETRAS	RETRAS
Moraru Teodor, CI	1.33 %	1.29 %
PR	5.10 %	5.03 %
Formaniuc Ghenadii, CI	1.61 %	1.60 %
Ciobanu Ion, CI	0.96 %	1.30 %
PL	0.32 %	0.37 %
FASM	10.98 %	10.97 %

Preliminary results on the vote count
in Balti municipality

Candidate COUNCILOR	CEC data	Promo-LEX data
CUB	0.50 %	0.51 %
PN	24.77 %	24.44 %
PSDE	0.50 %	0.53 %
CC	0.87 %	0.91 %
PS	6.69 %	6.56 %

Presentation of preliminary results regarding the parallel vote
tabulation in the municipality of Chisinau

Total no. of PS (nationwide)	305
No. of PS observed by Promo-LEX	305
No. of Minutes received	305/305
No. of Minutes wrong/invalidated	15/30
No. of Minutes missing	0

Presentation of preliminary results regarding the parallel vote
tabulation in the municipality of Balti

Total no. of PS (nationwide)	60
No. of PS observed by Promo-LEX	60
No. of Minutes received	60/60
No. of Minutes wrong/invalidated	1/5
No. of Minutes missing	0

Minutes that contain errors

(Mayor, Chisinau municipality)

Type of errors	Number
$D = F+H$	4
$E = C-D$	3
$C \geq D$	1
$H = G1+G2$	10
$F = D-H$	4
$J = I-C$	4

Minutes that contain errors

(Mayor, Chisinau municipality)

Type of erros	Number
$J = I-C$	1